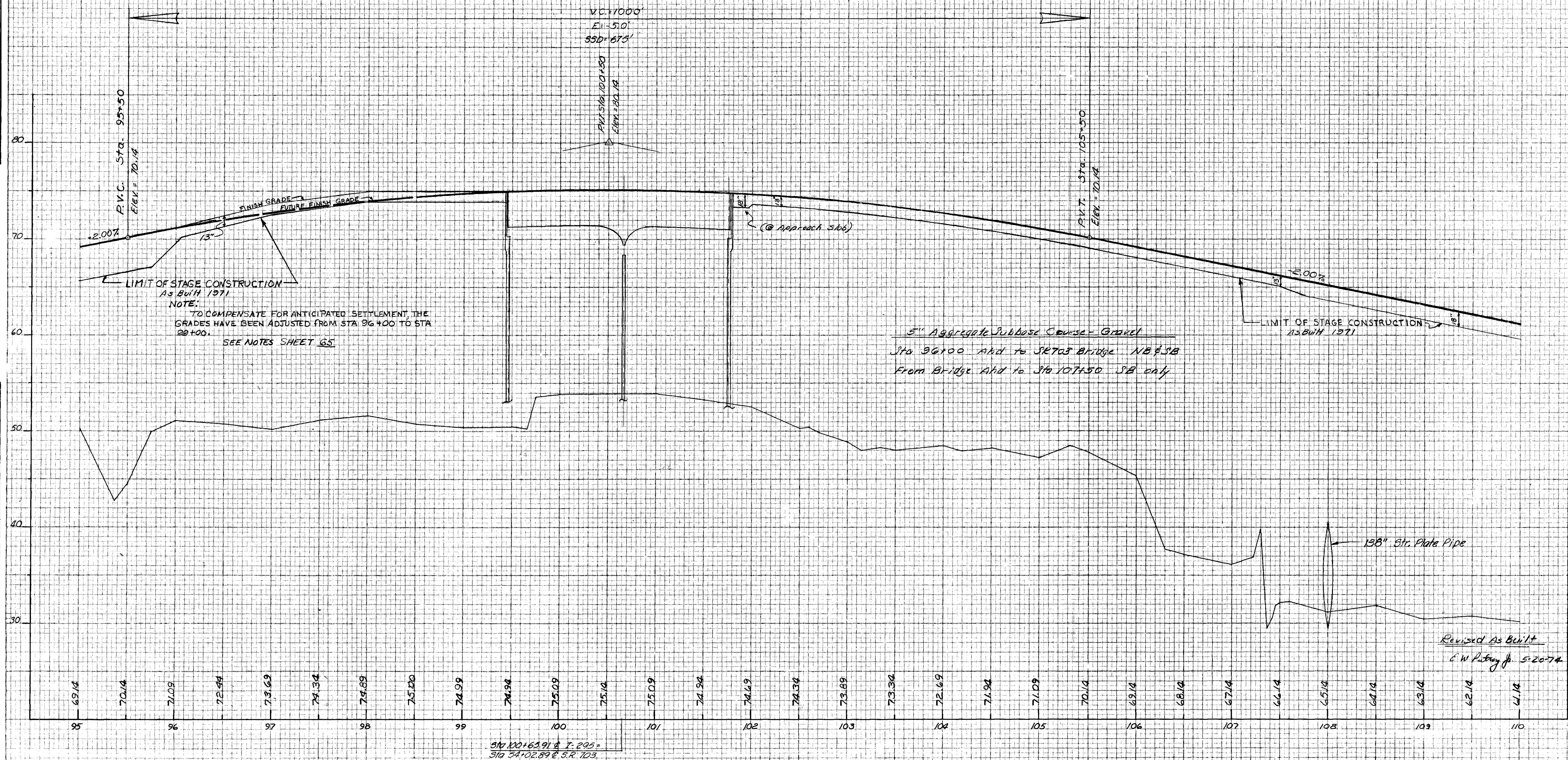


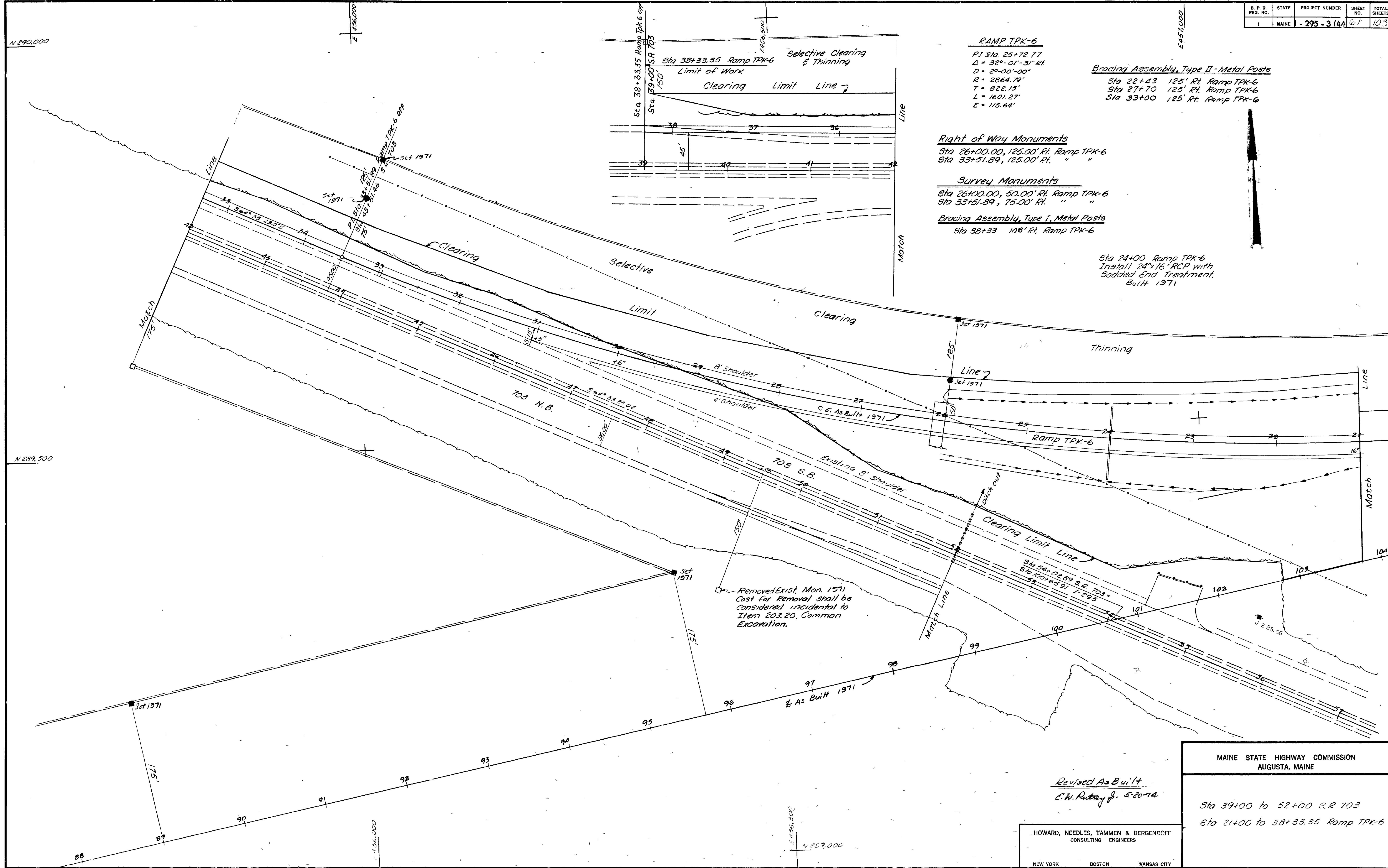
B. P. R. REG. NO.	STATE	PROJECT NUMBER	SHEET NO.	TOTAL SHEETS
1	MAINE	1-295-3 (4A	60	103

FINAL SURVEY		BY	DATE
SURVEYED _____			
PLOTTED _____			
TEMPLATE _____			
AREAS _____			
AREAS CHECKED _____			
NO. _____			

ORIGINAL SURVEY	SURVEYED	BY	DATE
NOTE BOOK	PLOTTED	T.L.W. & B.C.A.	7-3-69
	TEMPLATE		
	AREAS		
NONE	AREAS CHECKED		



Sta. 95+0 to Sta. 110+0



RAMP TPK-6

P.I. Sta. 25+72.77
 $\Delta = 32^{\circ} 01' 31''$ Rt.
 $D = 2^{\circ} 00' 00''$
 $R = 2864.79'$
 $T = 822.15'$
 $L = 1601.27'$
 $E = 115.64'$

Bracing Assembly, Type II - Metal Posts

Sta 22+43 125' Rt. Ramp TPK-6
 Sta 27+70 125' Rt. Ramp TPK-6
 Sta 33+00 125' Rt. Ramp TPK-6

Right of Way Monuments

Sta 26+00.00, 125.00' Rt. Ramp TPK-6
 Sta 33+51.89, 75.00' Rt. "

Survey Monuments

Sta 26+00.00, 50.00' Rt. Ramp TPK-6
 Sta 33+51.89, 75.00' Rt. "

Bracing Assembly, Type I, Metal Posts

Sta 38+33 108' Rt. Ramp TPK-6

Sta 24+00 Ramp TPK-6
 Install 24"x16" RCP with
 Sodded End Treatment.
 Built 1971

Revised As Built
 C.W. Patten Jr. 5-20-74

HOWARD, NEEDLES, TAMMEN & BERGENDOFF
 CONSULTING ENGINEERS

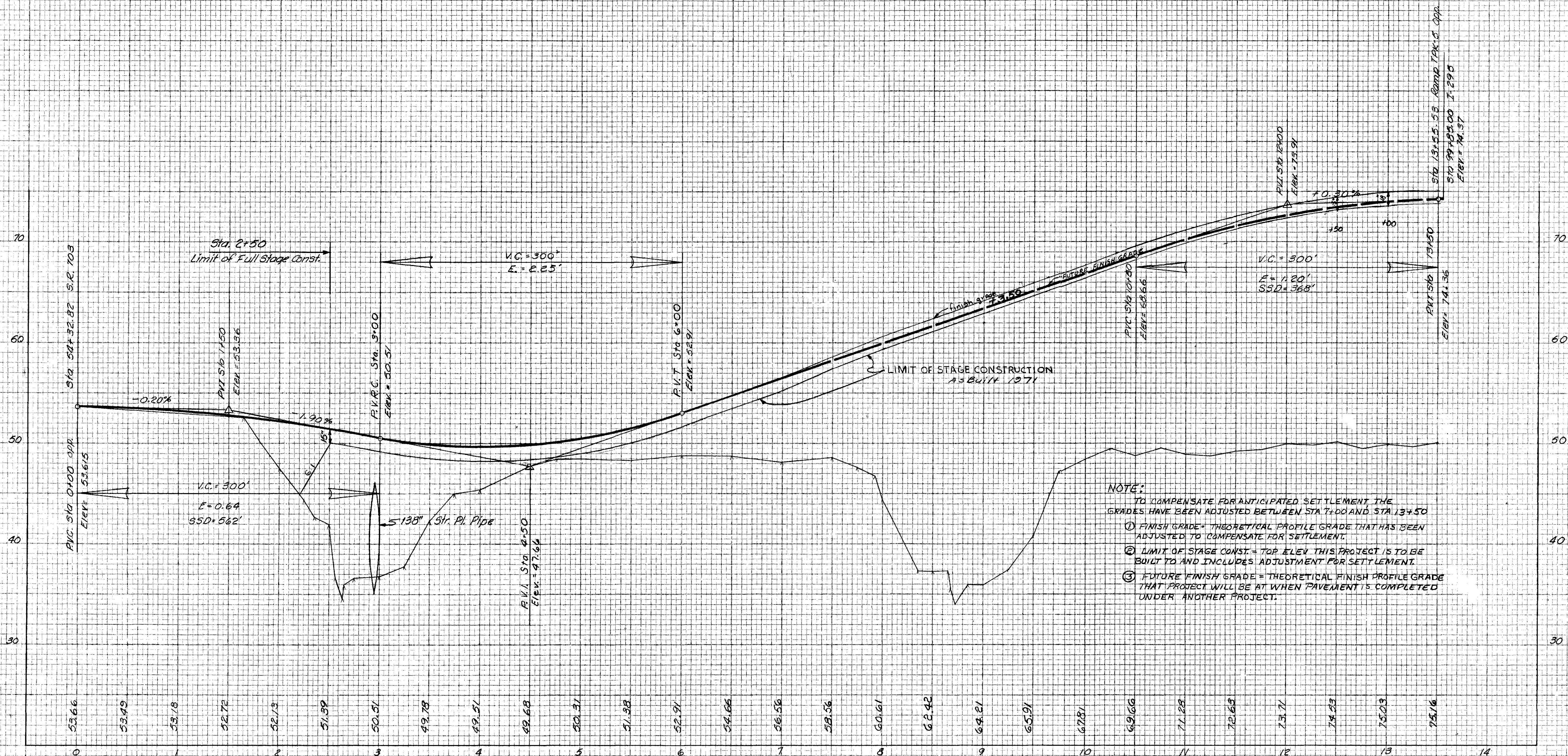
NEW YORK BOSTON KANSAS CITY

MAINE STATE HIGHWAY COMMISSION
 AUGUSTA, MAINE

Sta 39+00 to 52+00 S.R. 703
 Sta 21+00 to 38+33.35 Ramp TPK-6

FINAL SURVEY	SURVEYED PLOTTER	DATE
NO.	AREA CHECKED	
	NOTE BOOK	
	TEMPLATE	
	AREAS CHECKED	

ORIGINAL SURVEY	SURVEYED PLOTTER	DATE
NO.	AREA CHECKED	
	NOTE BOOK	
	TEMPLATE	
	AREAS CHECKED	

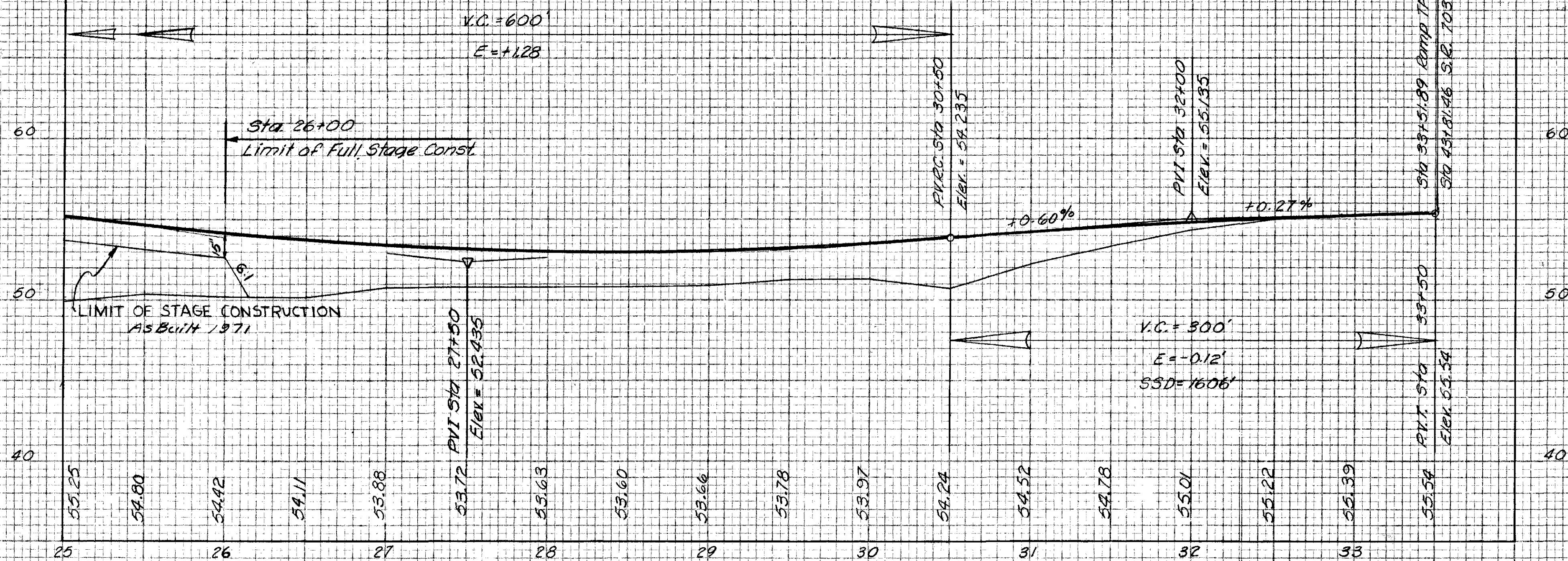
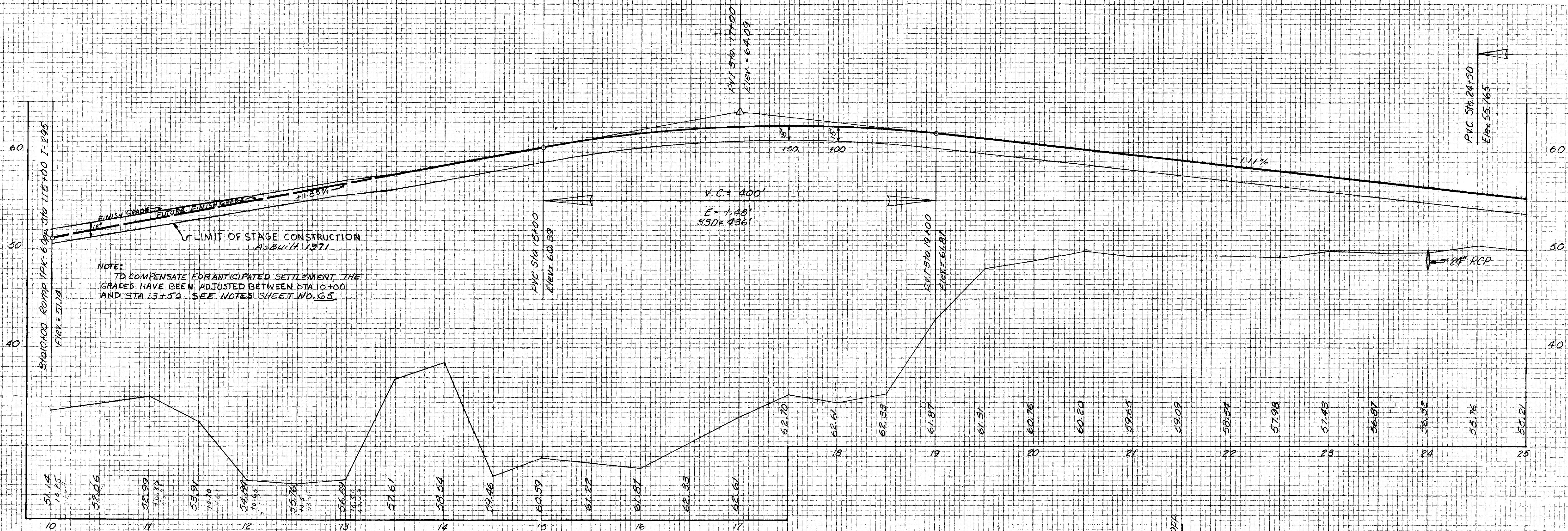


RAMP TPK-5

RAMP TPK-5
PROFILE

FINAL SURVEY NOTE BOOK NO.	SURVEYED PLOTTED DATE BY	DATE

ORIGINAL SURVEY NOTE BOOK NO.	SURVEYED PLOTTED DATE BY	DATE
205/246	J.W.V. J.W.V.	7/67



RAMP TPK-6

RAMP TPK-6
PROFILE

PLAN		BY	DATE
NOTE BOOK			
No.			
SURVEYED			
PLOTTED			
ALIGNMENT CHECKED RT. OF WAY CHECKED			

